



**BOSCH**

Invented for life

Bosch and Genetec.  
End-to-end security,  
day after day  
**Genetec**<sup>™</sup>

## Some of the world's biggest crimes go unnoticed

The Internet of Things makes our lives more connected, but it also leaves us vulnerable to cybercrime. Online hacking has become so widespread that, by 2021, it's estimated that the cost of cybercrime damages will be \$6 trillion every year\*. All it takes is for a hacker to find a single weak link in a surveillance network to gain access to, and jeopardize, an entire data system. To cancel out this risk, employ a data security system that's been configured by experts with vast cybersecurity knowledge to make it completely effective from end-to-end.



When it comes to mission-critical video security projects, one name you can count on is Genetec. Having access to the VMS expertise of Genetec and Bosch innovative surveillance cameras gives you the upper hand over the hackers, because Bosch cameras and Genetec systems are fully integrated, resulting in an end-to-end data security solution incorporating all Bosch network video surveillance cameras, plus Genetec Archiver and Security Center. All network-wide communications between Bosch cameras and Genetec Archiver and Security Center are assigned an authentication key. This electronic signature enables us to verify the legitimacy of network components like cameras or storage units, and viewing clients, making it possible to build an infrastructure of trust before network-wide communications start.

\*Source - Official 2017 Annual Cybercrime Report.

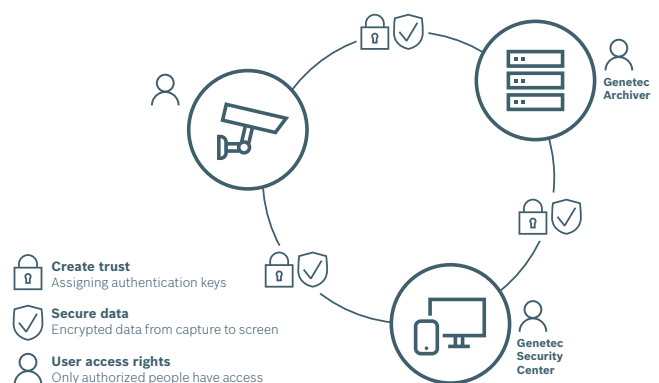
### **Bosch Security Systems B.V.**

Eindhoven, The Netherlands  
[www.boschsecurity.com](http://www.boschsecurity.com)

Technical data subject to modification without notice.  
Printed in Germany. Any color variations are due to the limitations of the printing process.  
Printed on 100% chlorine-free bleached cellulose manufactured in an environmentally friendly process.

## The best form of protection is encryption

Cybercrime is the greatest threat to every company in the world\*, so you need an effective and reliable method of safeguarding your system, which is why encryption of data streams and stored data is vital. All Bosch IP-cameras have a built-in Trusted Platform Module (TPM) to safely store cryptographic keys and enable encryption of all video data, which is then sent from the camera to the Genetec Archiver using SRTP (Secure Real-Time Transport Protocol). Using SRTP throughout the whole infrastructure enables you to set up a secured multi-cast network, so you get security and good network scalability at the same time. Additional security is established via 'permissioning', based on privileges accumulated by specific users, and the ability to synchronize and monitor all users from Active Directory from a centralized point at Windows level.



## Securing your cameras, management software, and clients

The Genetec Archiver uses a client certificate (signed by a trusted third party and factory-installed), which is far less vulnerable to hacking than a password, to authenticate themselves to the Bosch camera. In addition, only Bosch-approved firmware updates are accepted, and any cryptographic operations are only executed inside the unique Trusted Platform Module (TPM). Genetec also uses certificate authentication for its Security Center management software and clients. The video management systems interact directly and securely with Bosch cameras, and because stored data stays encrypted and data is transmitted via SRTP, confidentiality and data protection are guaranteed.

Together, Bosch and Genetec provide one of the world's best data security solutions.