

ID5 TD / ID5 TD CM

Intercom station for desks and walls



Adaptive solutions for interior zones

Maximum flexible and compatible – that's exactly what the Commend Indoor series provides. For the stylish Intercom stations, only high-quality materials such as glass, stainless steel and aluminium are used. Thanks to its flat housing and the timeless look, the Indoor series Intercom stations are perfectly designed for indoor use – whether on desks or walls.

Each Indoor series Intercom station comes with a large 5" touch display. Crystal clear audio enables high speech intelligibility. In order to fulfil individual needs, the Intercom stations are available without (ID5 TD) or with (ID5 TD CM) a high-resolution video camera.

Via the well-arranged, intuitive web interface, the Indoor series Intercom stations can quickly and easily be configured. Not only that: the flexible web interface allows to manage handset, I/O module and induction loop. These add-ons are connected via the two USB slots on the rear.

Features and highlights

- High-performance processor and wide range of functions
- Flexible installation options with a flush mount or surface mount kit and various options to be used on desks
- Large 5" touch display with 720 x 1280 pixels
- Comfortable configuration via web interface
- Acoustically optimised components for high intelligibility
- Available with or without wide view angle video camera
- Easy to expand with handset, induction loop, audio interfaces as well as inputs and outputs via USB
- Extra-high production quality based on durable high-grade materials
- High level IT security

Ready for Symphony Cloud Services

The Intercom stations can be connected to Symphony and use its services. Symphony is the world's first cloud-based Intercom platform with "Privacy and Security by Design". Visit the Symphony website to find out about the services currently available and if they are already offered in your country. symphony.commend.com

Key benefits at a glance

Crystal clear sound: two loudspeakers and high-quality audio technology ensure a perfect listening and speaking experience.

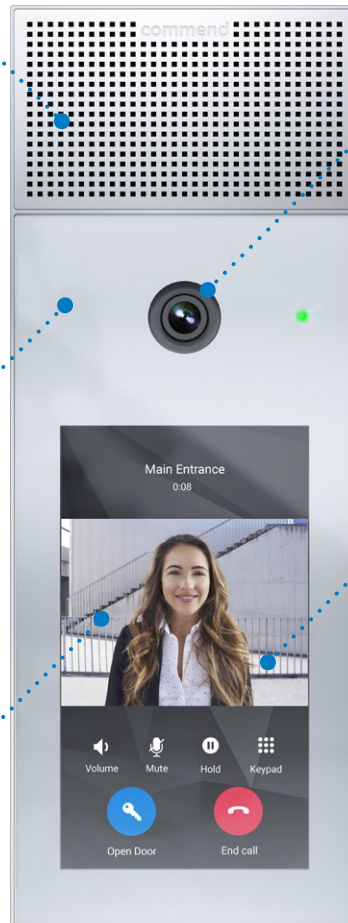
Enhanced overview: the optional built-in high-resolution video camera has a picture-perfect viewing angle that allows it to capture persons who are not at eye-level with it, such as wheelchair users or children.

Powerful performance, timeless design: the high-end Intercom stations make use of high-quality materials and look smashing. They are equally suited for mounting on a wall or placing on a desktop.

The 5" colour touch display is individually¹⁾ configurable and shows the live image from the other station during video calls.

A question of attitude: the stations are quick and easy to configure individually¹⁾ over the Command web interface.

CONCERTO always strikes the right note, with two MEMS microphones making sure that no interfering background noise gets through. The software and special audio algorithms provide an exceptionally high level of speech intelligibility.



¹⁾ Door and indoor mode

Door mode (see also display of ID5 TD CM at "Versions"):

- Any number of buttons
- Possibility to scroll
- No menu functions

Indoor mode (see also display of ID5 TD at "Versions"):

- Up to six buttons
- Menu functions ("Home", "Keypad", "Contacts" and "Settings")

Product details

Versions

ID5 TD

The ID5 TD is a high-end Intercom station with an individually¹⁾ configurable 5" touch display. The ID5 TD is ideally suited for desk installation.



ID5 TD CM

The ID5 TD CM is a high-end Intercom station with a high-definition camera and an individually¹⁾ configurable 5" touch display. The ID5 TD CM is ideally suited for wall mounting.



Accessories

Desk kit ID5 DKAD

With the desk kit ID5 DKAD, a base module can flexibly be placed on an desk. Rubber foot and an anti slip strip enables optimal grip. With the ID5 DKAD, the tilt angle of the Intercom station can be adjusted individually to any setting between 30° and 60°.



Desk kit with handset ID5 DKHS

With the desk kit ID5 DKHS, a base module can quickly and easily be placed on a desk. To ensure optimum usability, the ID5 DK positions the device at a 45° angle. This desk kit includes a handset that is connected to the Intercom station via USB.



Desk kit ID5 DK

With the desk kit ID5 DK, a base module can quickly and easily be placed on an desk. To ensure optimum usability, the ID5 DK positions the device at a 45° angle.



ID5 TD CM
with adjustable desk kit ID5 TD DKAD



ID5 TD CM
with desk kit (45°) ID5 TD DK



ID5 TD CM
with desk kit (45°)
and handset ID5 TD DKHS

¹⁾ See "Door and indoor mode".

Gypsum wall/panel kit ID5 FB

With the gypsum wall/panel mount kit ID5 FB, a base module can be installed e.g. to a gypsum wallboard. The ID5 FB is designed for wall mounting during the construction or renovation phase.



Flush mount box ID5 FBS

With the flush mount box ID5 FBS, a base module can be installed e.g. to a brick wall. The ID5 FBS is designed for wall mounting during the construction or renovation phase. To mount the Intercom station, the gypsum wall/panel kit ID5 FB is required.



Surface mount kit ID5 SH

With the surface mount kit ID5 SH, a base module can be installed to any wall. The ID5 SH is especially designed for subsequent mounting to a wall or for mounting to thin walls.

The surface mount kit ID5 SH can be mounted to a flush mount wall box (acc. EN 60670-1; 60 mm/2.36 in screw distance; single or double box).



Safety switch box IP Secure Connector

The IP Secure Connector provides high performance and high, absolute security, even if the connected Intercom station is located outdoors: If an unauthorised attempt is made to remove the Intercom station, e.g. to access the connected Ethernet cable, the IP Secure Connector interrupts the connection to Intercom station and LAN. This ensures that it is neither possible to access the network nor to open a door or gate.



Induction loop kit AFIL-USB

With the AFIL-USB, a station can easily and quickly be equipped with an induction loop amplifier module. For this, only a free USB jack is required at the station. Thanks to its compact size, the AFIL-USB fits easily into a flush or surface mounting box.



Expansion module EB3E2A-AUD

The EB3E2A-AUD expansion module provides an easy way to expand the I/O and audio capabilities of a station. The expansion module is suitable for any applications where inputs and outputs are required. It has three inputs, two output relays and ports for direct connection of an external loudspeaker, external microphones and handset. Line-in and line-out connectors provide additional flexibility. The board can be connected to the station PCB through a USB cable and is immediately available in the system.



USB I/O module EB1E1A

With the USB I/O module EB1E1A, a base module can be expanded with an input and a relay output (normally open contact). The EB1E1A can be connected to a free USB port. By doing this, a input as well as a floating, galvanically-isolated output contact is available immediately – e.g. for use with a door opener.



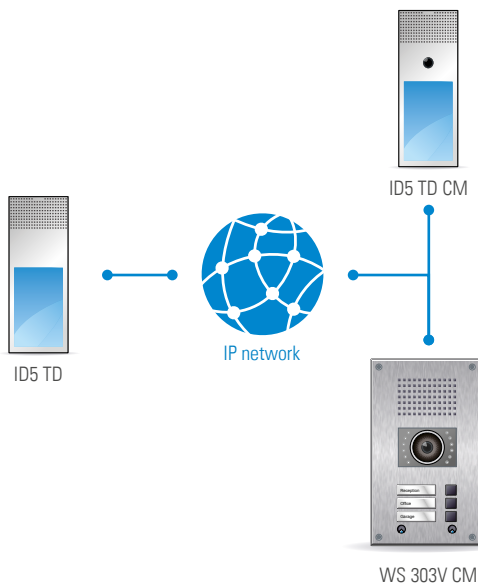
Power injector PA 25W POE-DC

In applications where PoE sourcing equipment is not available, the optional power injector PA 25W POE-DC offers a compact, convenient solution. It supports a wide DC input range (24–48 V) and is IEEE 802.3af/at compliant. The power injector connects easily and conveniently to an Intercom station via Ethernet cable.



System overview

Serverless operation

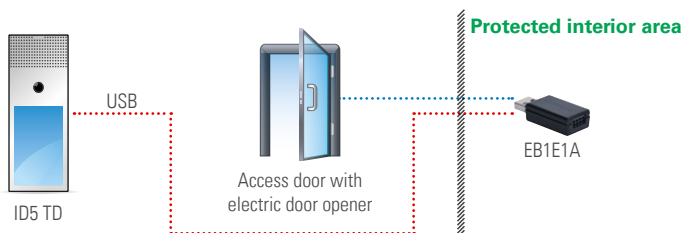


Operation with server

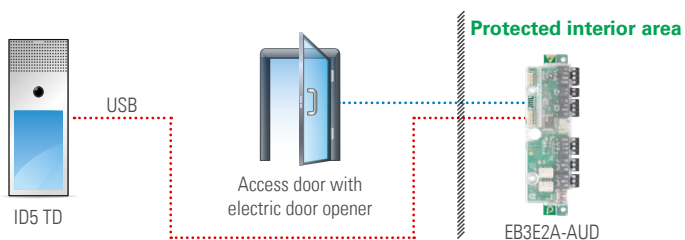


Wall application examples

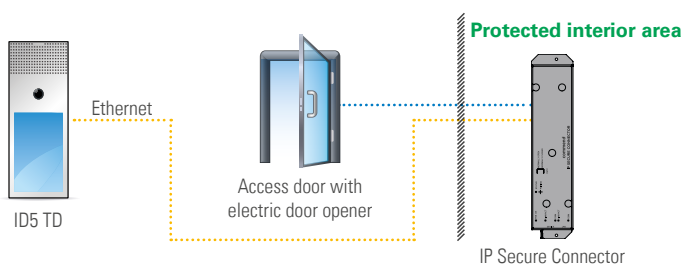
ID5TD with EB1E1A (1 output for door opener, connected via USB)



ID5TD with EB3E2A-AUD (3 inputs, 2 outputs, connected via USB)



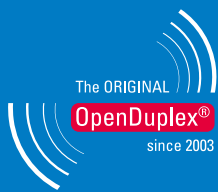
ID5TD with IP Secure Connector (door opener, network security and PoE, connected via Ethernet)



La passion pour l'audio par Commend

Ultimate speech intelligibility in any situation

OpenDuplex® with ultra HD Voice by Commend enables **natural, hands-free talking and listening** – as crystal clear and natural as a face-to-face conversation.



Natural
communication



Beamforming



High
volume



Background noise
suppression



Loudspeaker/microphone
surveillance

Audio // Basics

ultra HD Voice	ultra HD Voice by Commend transfers the audio signal at a bandwidth of 20 kHz
Amplifier	High efficient class-D amplifier with 2,5 W
Microphone	Two digital MEMS microphones
Loudspeaker	2 x 8 Ω loudspeaker with humidity-resistant special membrane type for optimum sound quality

Learn more

audio.commend.com

Audio // Functions

Dynamic **background noise suppression** virtually eliminates all ambient noise

Beamforming for best intelligibility and ambient noise suppression

Loudspeaker/microphone surveillance – ensures the availability of the Intercom station while reducing the need for manual verification of its functionality

Système audio Peer-to-peer – reduces network and server load to ensure efficient use of resources

Conference call function for simultaneous talking with multiple conversation partners

OpenDuplex® for natural, hands-free communication

Switched Duplex for situations with high noise level

ID5 TD / ID5 TD CM

Technical specifications

Technical data ID5 TD / ID5 TD CM

IP rating:	IP40 (acc. EN 60529)
Microphone:	two digital MEMS microphones
Loudspeaker:	special membrane type for optimal sound quality
Amplifier:	integrated class-D amplifier with 2,5 W
Sound pressure level:	max. 82 dB (± 3 dB, at 1 m)
Display:	5" touch display (TFT) resolution: 720 x 1280 pixels luminance: typ. 800 cd/m ²
Audio bandwidth:	up to 20 kHz
Audio codecs:	Opus, G.722, G.711 a-law and G.711 u-law
Video features:	codecs: H.264 (SIP video and ONVIF), Motion JPEG (HTTP video and ONVIF) and RTSP ONVIF specification: ONVIF Profile S
IT security:	SIP via TLS, SRTP, IEEE 802.1X, MJPEG via HTTPS, HTTPS for accessing the web interface and interfaces
Operating temperature range:	0 °C to +50 °C (+32 °F to +122 °F)
Storage temperature range:	–20 °C to +70 °C (–4 °F to +158 °F)
Relative humidity:	up to 90%, not condensing
Connection:	RJ45 jack for Ethernet and PoE (10/100 Mbit/s) 2 x 2.0 USB (Type A) for external devices ¹⁾
Power supply ²⁾:	PoE: IEEE 802.3af/Class 0, IEEE 802.3at/Typ 1
Cabling:	min. Cat. 5, shielded ³⁾
Approvals and compliances:	EN 61000-6-2, EN 61000-6-3, EN 55032 Class B, EN 55024 IEC/EN/UL 62368-1, IECCE CB Scheme (by UL) UL Listed (E351589), FCC Part 15 Class B, ICES-003 Class B
Wall mounting:	gypsum wall/panel mount kit ID5 FB flush mount box ID5 FBS (requires ID5 FB) surface mount kit ID5 SH
Dimensions (H x W x D):	with flush mount kit: 228 x 86 x 11 mm (8.98 x 3.38 x 0.43 in) with surface mount kit: 228 x 86 x 28 mm (8.98 x 3.38 x 1.10 in)
Weight incl. packaging:	approx. 600 g (1.32 lbs)
Optional accessories:	ID5 DKAD (adjustable desk kit) ID5 DK (desk kit) ID5 DKHS (desk kit with handset) AFIL-USB (induction loop kit) EB1E1A (USB I/O module) EB3E2A-AUD (expansion module) IP Secure Connector (safety switch box) PA 25W POE-DC (power injector)

¹⁾ The USB connections are only intended for use with Commend devices. Do not use the USB jacks e.g. to charge mobile phones.

If a USB device should be installed separately using a USB extension cable, the USB cable length must not exceed 5 m.

²⁾ For power supply, a PoE switch or PoE injector is required (not included in extent of supply), e.g. IP Secure Connector.

³⁾ The maximum line length of Cat. 5 cabling in a LAN is 100 m (328 ft) – e.g. from switch to Intercom station.



Technical data camera (ID5 TD CM only)

Image sensor:	1/3 in RGB CMOS
Lens:	F1.9, fixed aperture, 160° diagonal angle, 128° horizontal angle, 96° vertical angle
Lighting conditions:	min. 5 lux (below the video image is shown in black and white)
Resolution (W x H):	720 x 1280 pixels
Frame rate:	up to 30 fps
Video streaming:	up to 6 HTTP video streams simultaneously

Extent of supply

- Intercom station
- Cleaning cloth
- Tx08 screwdriver
- Short reference

Fallback IP address

Fallback IPv4 address within a network without DHCP server:
192.168.1.150 (subnet mask: 255.255.255.0)

ID5 TD / ID5 TD CM

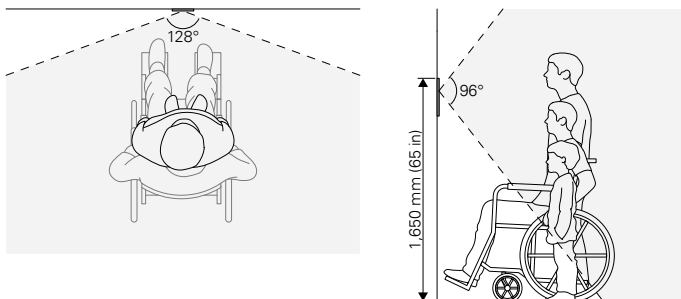
Installation instructions

Installation instructions

- Do not place the device in areas where it may become wet or damp, and avoid dusty, humid and high temperature environments (see also data sheet).
- Do not expose the Intercom station to direct sunlight.
- For flush mounting, a gypsum wall/panel mount kit ID5 FB and a flush mount box ID5 FBS are required (available separately).
- For surface mounting, a surface mount kit ID5 SH is required (available separately).
- For desk mounting, a desk mount kit ID5 DK or ID5 DKHS is required (available separately).
- Do not install the Intercom station on unstable walls or on surfaces, which cannot support the device's weight.
- Make sure the surface mount kit ID5 SH is not subject to torsional forces (e.g. on uneven walls).
- No water may penetrate into the mount kit. Therefore, make sure it is waterproof (towards the wall).
- It is recommended to mount the optional CAT. crimp jack C-RJ45-MONT onto the open end of a CAT. cable within a flush mount box.
- Use moistened microfibre cloths for cleaning the Intercom station.

Recommended mounting height

The upper edge of the Intercom station approx. 1,650 mm (65 in) from the finished floor. Adapt the mounting height to the individual needs.



NOTE:

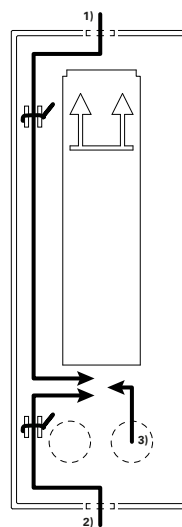
- For a barrier-free accessibility, it is recommended to mount the Intercom station with sufficient distance to walls or corners.
- When mounting the Intercom station ID5 TD CM, pay attention to the correct camera angle in terms of accessibility so that wheelchair users and children can be detected by the camera: 96° (vertical) x 128° (horizontal)

Safety instructions

- This Intercom station shall be installed or replaced by trained and qualified personnel only.
- Observe the country-specific standards for installation, mounting and configuration.
- Only use Commend accessories that comply with the Intercom station's technical specifications.
- The front of the Intercom station is made of glass. Do not use the Intercom station when the glass is damaged.
- All connected circuits shall fulfil the requirements for Safety Extra Low Voltage (SELV) and Limited Power Source (LPS) according to IEC/EN 60950-1 and the requirements for ES1, PS2 circuits and Annex Q (Limited Power Source) as per IEC/EN/UL 62368-1.
- Disconnect the Ethernet cable for any maintenance of the device.
- Do not make any modifications to the Intercom station.
- This equipment has been tested and found to comply with the limits for a Class B digital device, pursuant to part 15 of the FCC Rules. These limits are designed to provide reasonable protection against harmful interference in a residential installation. This equipment generates, uses and can radiate radio frequency energy and, if not installed and used in accordance with the instructions, may cause harmful interference to radio communications. However, there is no guarantee that interference will not occur in a particular installation. If this equipment does cause harmful interference to radio or television reception, which can be determined by turning the equipment off and on, the user is encouraged to try to correct the interference by one or more of the following measures:
 - Reorient or relocate the receiving antenna.
 - Increase the separation between the equipment and receiver.
 - Connect the equipment into an outlet on a circuit different from that to which the receiver is connected.
 - Consult the dealer or an experienced radio/TV technician for help.

Cable run ID5 SH

See also "Surface mounting with ID5 SH"

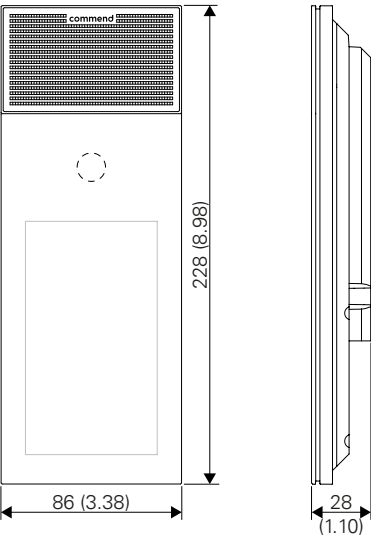


- 1) Cable supply from top
- 2) Cable supply from bottom
- 3) Cable supply from rear

Dimensions

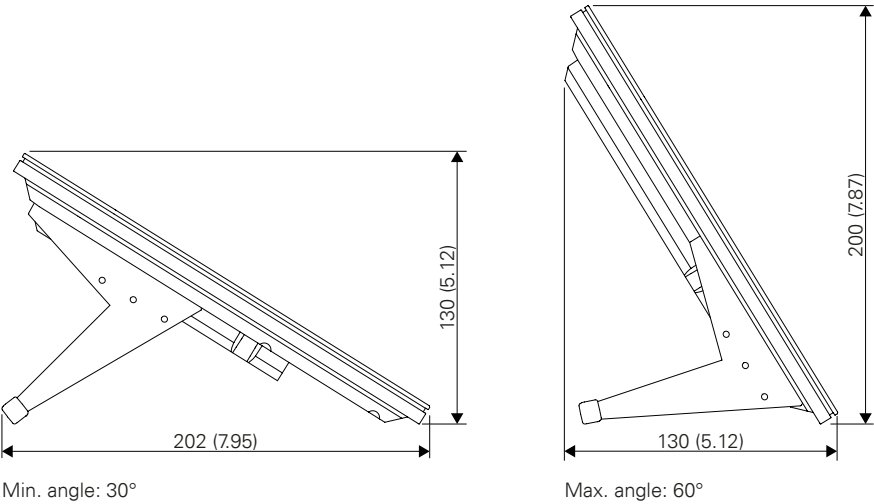
ID5 TD / ID5 TD CM

Measuring units in mm (in), not to scale!



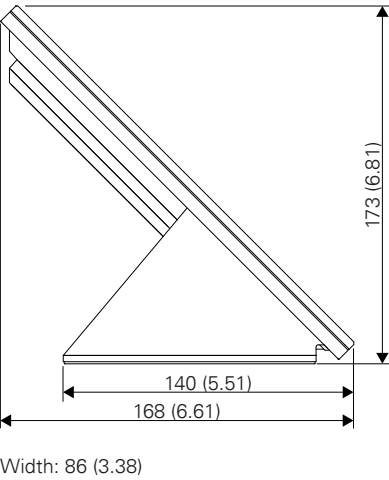
ID5 TD / ID5 TD CM with desk kit ID5 DKAD (min. and max. angle)

Measuring units in mm (in), not to scale!



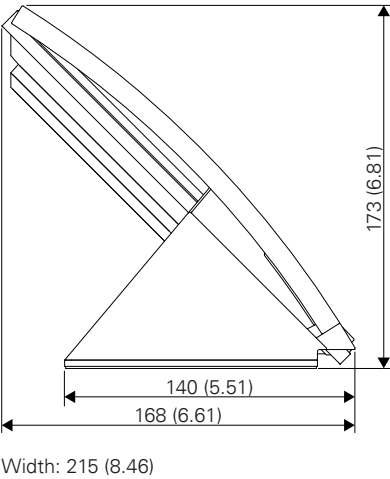
ID5 TD / ID5 TD CM with desk kit ID5 DK

Measuring units in mm (in), not to scale!



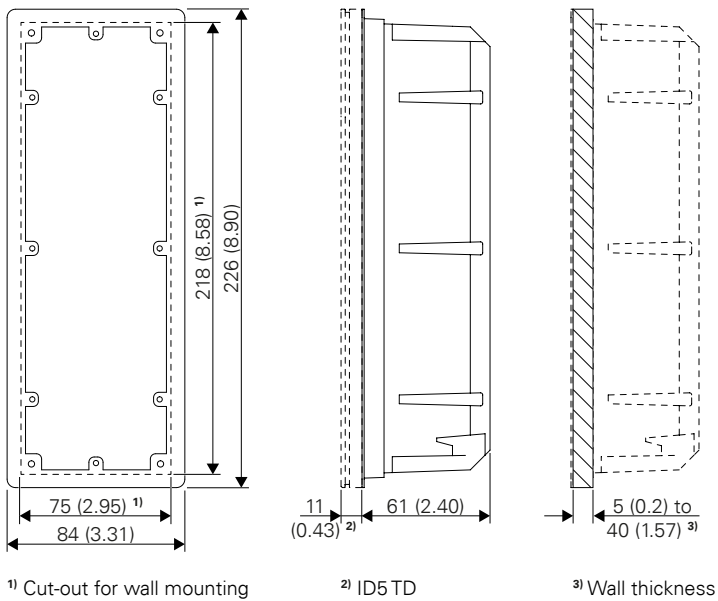
ID5 TD / ID5 TD CM with desk kit with handset ID5 DKHS

Measuring units in mm (in), not to scale!



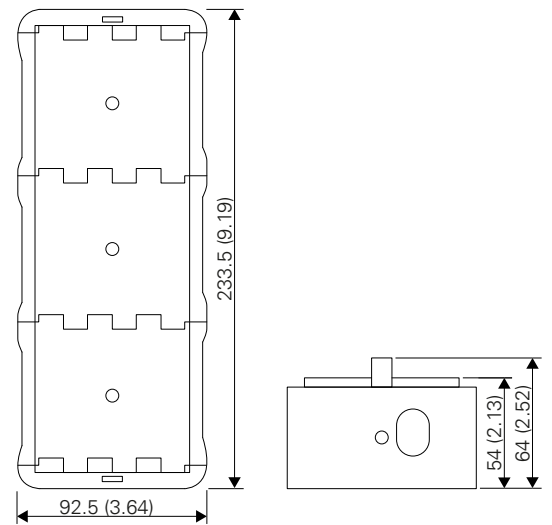
Gypsum wall/panel mount kit ID5 FB

Measuring units in mm (in), not to scale!



Flush mount box ID5 FBS

Measuring units in mm (in), not to scale!

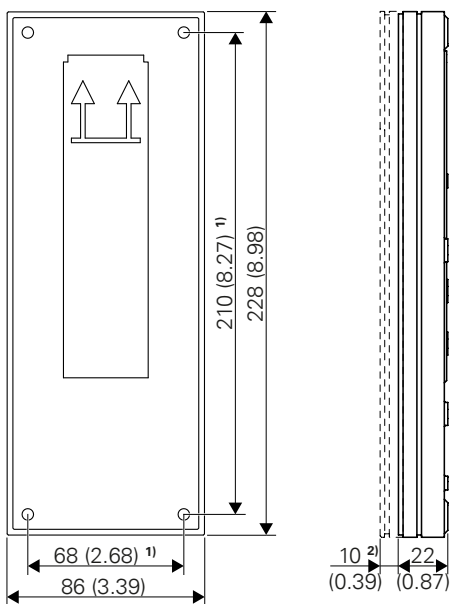


NOTE:

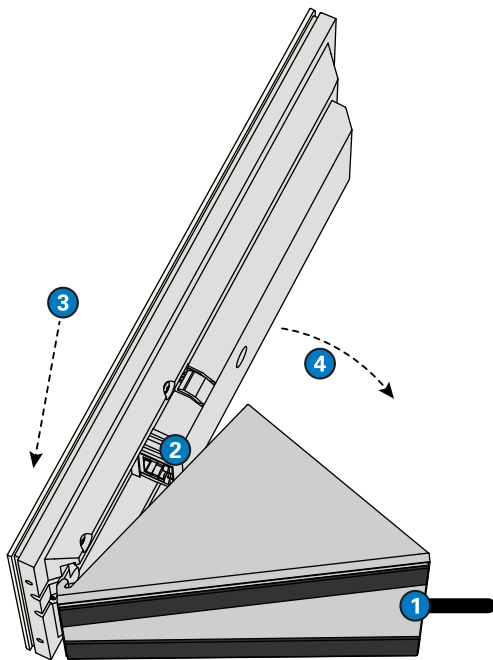
For mounting of an Indoor series Intercom station to the flush mount box ID5 FBS, the gypsum/panel mount kit ID5 FB is required.

Surface mount kit ID5 SH

Measuring units in mm (in), not to scale!

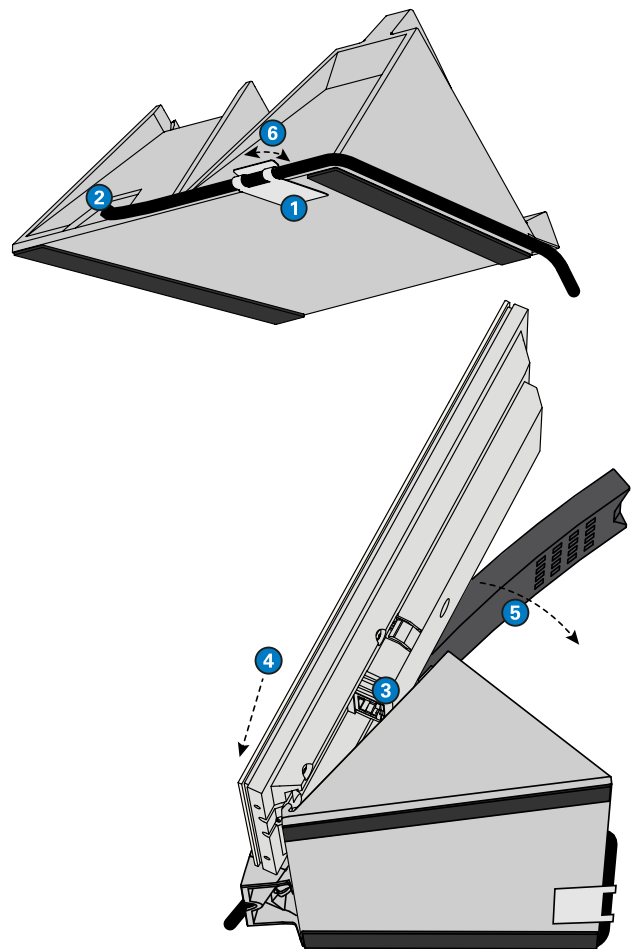


Desk mounting with ID5 DK



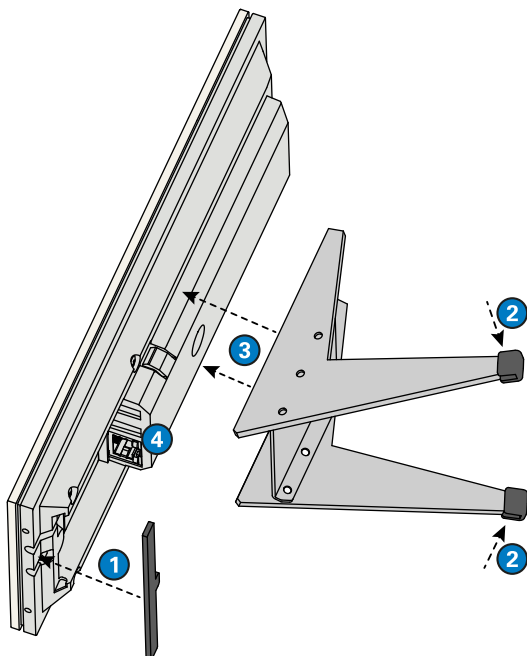
- 1 Guide the required cables through the opening on the rear of the desk kit (Ethernet and USB cable, if needed).
- 2 Connect the cables.
- 3 Put the Intercom station onto the desk kit, lower end first.
- 4 Press the Intercom station onto the desk kit so that it snaps in place.

Desk mounting with ID5 DKHS



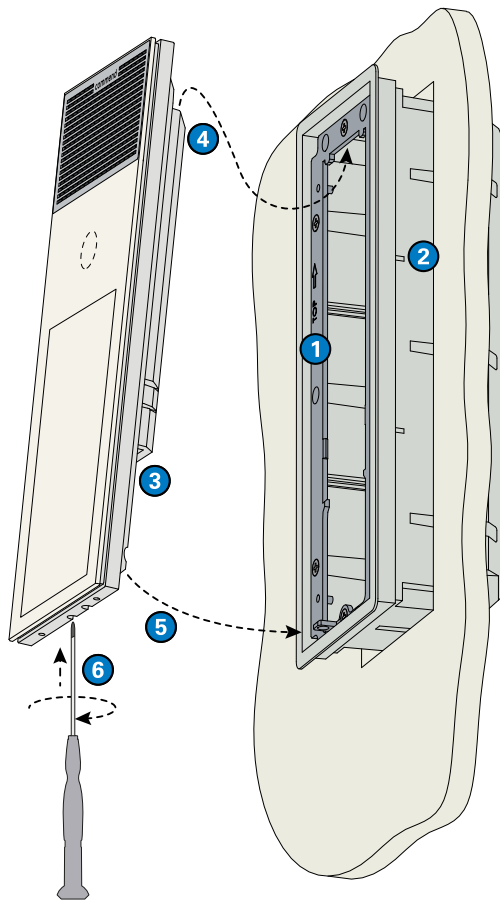
- 1 Remove the protection film from the adhesive strip and stick the cable clip on the desk kit in a way that the cut-out border forms a line with the housing (see illustration above).
- 2 Guide the required cables through the opening on the rear of the desk kit (Ethernet cable and USB cable of the handset).
- 3 Connect the cables to the Intercom station.
- 4 Put the Intercom station onto the desk kit, lower end first.
- 5 Press the Intercom station onto the desk kit so that it snaps in place.
- 6 Bend open the cable clip, guide through the USB cable of the handset and bend back the cable clip so that the USB cable is fixed.

Desk mounting with ID5 DKAD



- 1 Stick the supplied anti-slip strip onto the rear lower end of the Intercom station.
- 2 Press the two rubberised ends of the foot stand together.
- 3 Position the foot stand as desired on the rear of the Intercom station and release the rubberised ends.
- 4 Connect the required cables (Ethernet and USB cable, if needed).

Wall mounting with ID5 FB

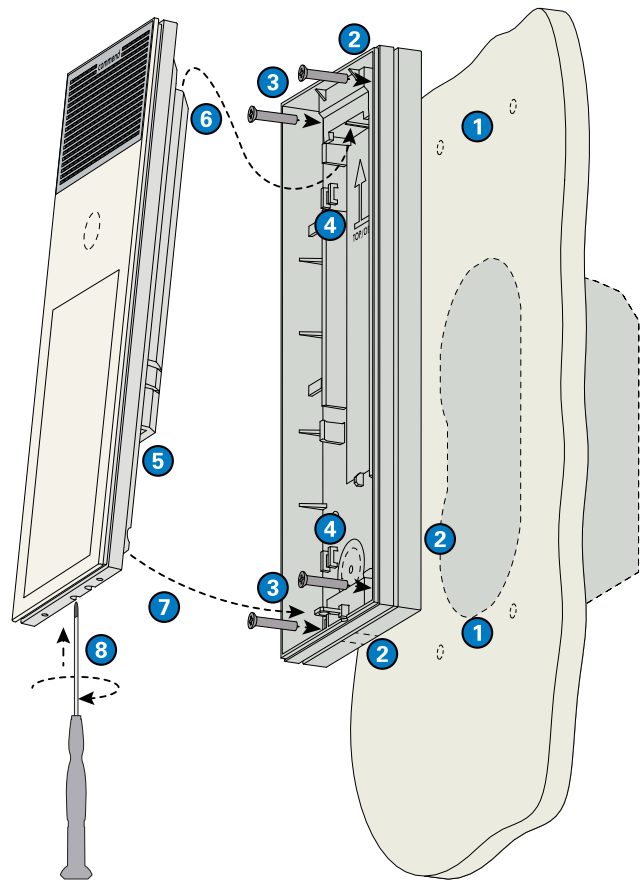


- 1 Make sure the arrows on the mounting frame point upwards.
- 2 Install the mounting box to the wall by means of the supplied drilling template.
- 3 Connect the required cables (Ethernet and USB cable, if needed).
- 4 Insert the Intercom station at the top of the surface mount kit.
- 5 Press the Intercom station with its lower end onto the mounting box.
- 6 Turn the locking screw clockwise down as far as it will go using the Tx08 screwdriver (included in extent of supply of the ID5 TD). Check whether the lower end of the Intercom station is fixed on the mounting frame.

NOTE:

For mounting on brick walls, additionally the flush mount box ID5 FBS is required (not included in extent of supply). In this case, mount the flush mount box ID5 FBS to the wall and then continue with 1.

Surface mounting with ID5 SH



- 1 Drill four holes in the wall (see "Dimensions") and insert the supplied dowels.
- 2 Cut out one of the provided cable entries depending on cable supply (from top, bottom or rear, see "Cable run") and guide the required cables through those entries (Ethernet and USB cable, if needed).
- 3 Install the surface mount kit to the wall using the supplied mounting screws (the arrows must point upwards).
- 4 Fix the Ethernet cable on the provided strain-relief using the supplied cable tie (see "Cable run").
- 5 Connect the cables.
- 6 Insert the Intercom station at the top of the surface mount kit.
- 7 Press the Intercom station with its lower end onto the surface mount kit.
- 8 Turn the locking screw clockwise down as far as it will go using the Tx08 screwdriver (included in extent of supply of the ID5 TD). Check whether the lower end of the Intercom station is fixed on the surface mount kit.

Quality tested. Reliable. Smart.

COMMEND products are developed and manufactured by Commend International in Salzburg, Austria.

The development and manufacturing processes are certified in accordance with **EN ISO 9001:2015**.



The technical data contained herein has been provided solely for informational purposes and is not legally binding. Subject to change, technical or otherwise. lolP®, OpenDuplex® and Commend® are trademarks registered by Commend International GmbH. All other brands or product names are trademarks or registered trademarks of the respective owner and have not been specifically earmarked.

A strong worldwide network

COMMEND is represented all over the world by local Commend Partners and helps to improve security and communication with tailored Intercom solutions.