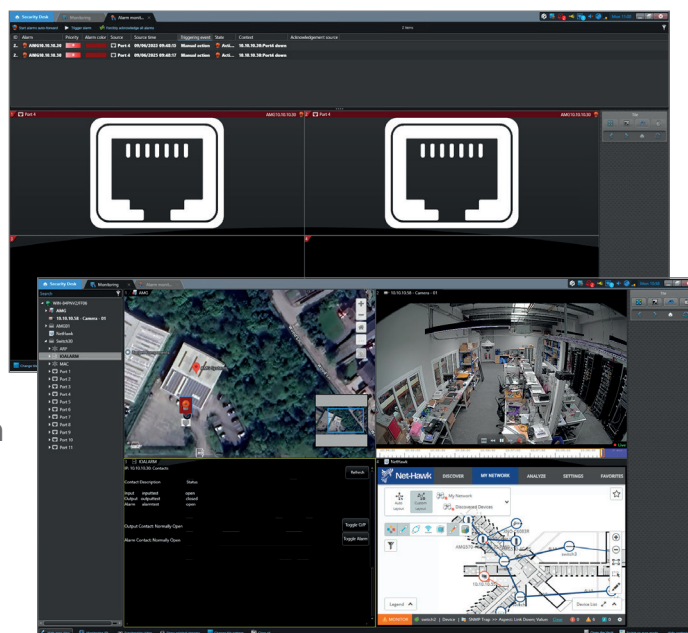
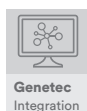


AMG SWITCH INTEGRATION WITH GENETEC SECURITY CENTER



Software Integrations

AMG's Genetec Security Center integration provides Genetec users with insights and control over their AMG industrial or commercial grade switches. AMG570 and AMG510 series models are visible from within the Genetec environment as native entities providing control and alarm capabilities.



[AMGINTEGENETEC]

OVERVIEW

The AMG Genetec integration allows Genetec Security Center users to add and discover industrial AMG570 series and commercial AMG510 series switches as native entities providing operators with real-time visibility into the status and health of the network directly from within Genetec Security Center. The native AMG plugin operates directly within the Genetec software ensuring that no middle-ware software applications or translators are required.

The AMG integration allows for the receiving of alarms from port state changes and contact closure events giving early warning of both faults and potential security breaches before the system is impacted.

The ability to cycle PoE on individual switch ports allows users to remotely reboot unresponsive cameras or other devices without the need to attend the physical location or have access or any knowledge to connect to the managed switch estate.

Trigger both manually and automatically contact closure outputs and alarm triggers on AMG570 series switches to action local events such as switching on an illuminator or activating an input on an alarm panel etc.

FEATURES

- AMG switches can be discovered and added as native Genetec entities
- Manage & monitor your network infrastructure of AMG products to gain insight into your switch estate directly from the VMS
- Smart alerting and actions provide real-time alerts to ensure a proactive response to any network related issues
- Control switch ports, Power-over-Ethernet and contact closure inputs and outputs from within the Genetec software
- Gain insight into the health and status of the network with switch and port statistics including ARP cache and MAC table monitoring
- Harness the powerful Genetec automation rules to trigger contact closures or shutdown ports without the requirement of manual interventions
- Enable network switch events to trigger alarms into the Genetec Security Center platform

Features & Specifications.

Standard Features.		Network Requirements.	
Network Discovery		SSH	TCP (22) to Switch
Network Mapping (manual)		SNMP	UDP (161) to Switch
Availability & Status Monitoring		SNMP TRAP	UDP (162) from Switch
Alerting & Alarms		Rule Direction Assumes Stateful Firewall	
Ethernet Port Control			
AMG Switch Inventory			
Contact Closure Input/Output Control			
Area View Management			
Device Partition Management			
Switch Entity Device Permissions			
		Hardware Requirements.	
		Server	Standard Genetec Specification
		Workstation	Standard Genetec Specification
		Software Requirements.	
		Supported Platform	Genetec Security Center 5.1.11 or later

Part Numbers.

Genetec SDK Part Numbers

GSC-1SDK-AMG-NDM	Genetec Security Center SDK License For AMG Switch Plugin
------------------	-----------------------------------------------------------

The Genetec SDK license must be ordered and obtained directly from Genetec before ordering the AMG Plugin.

AMG Part Numbers

AMGINT-GENETEC	Genetec Security Center AMG Switch Plugin Software
----------------	----------------------------------------------------

The AMG Professional Services team can provide assistance with installation, setup, configuration and training if required. Please contact your local AMG sales representative for further information.